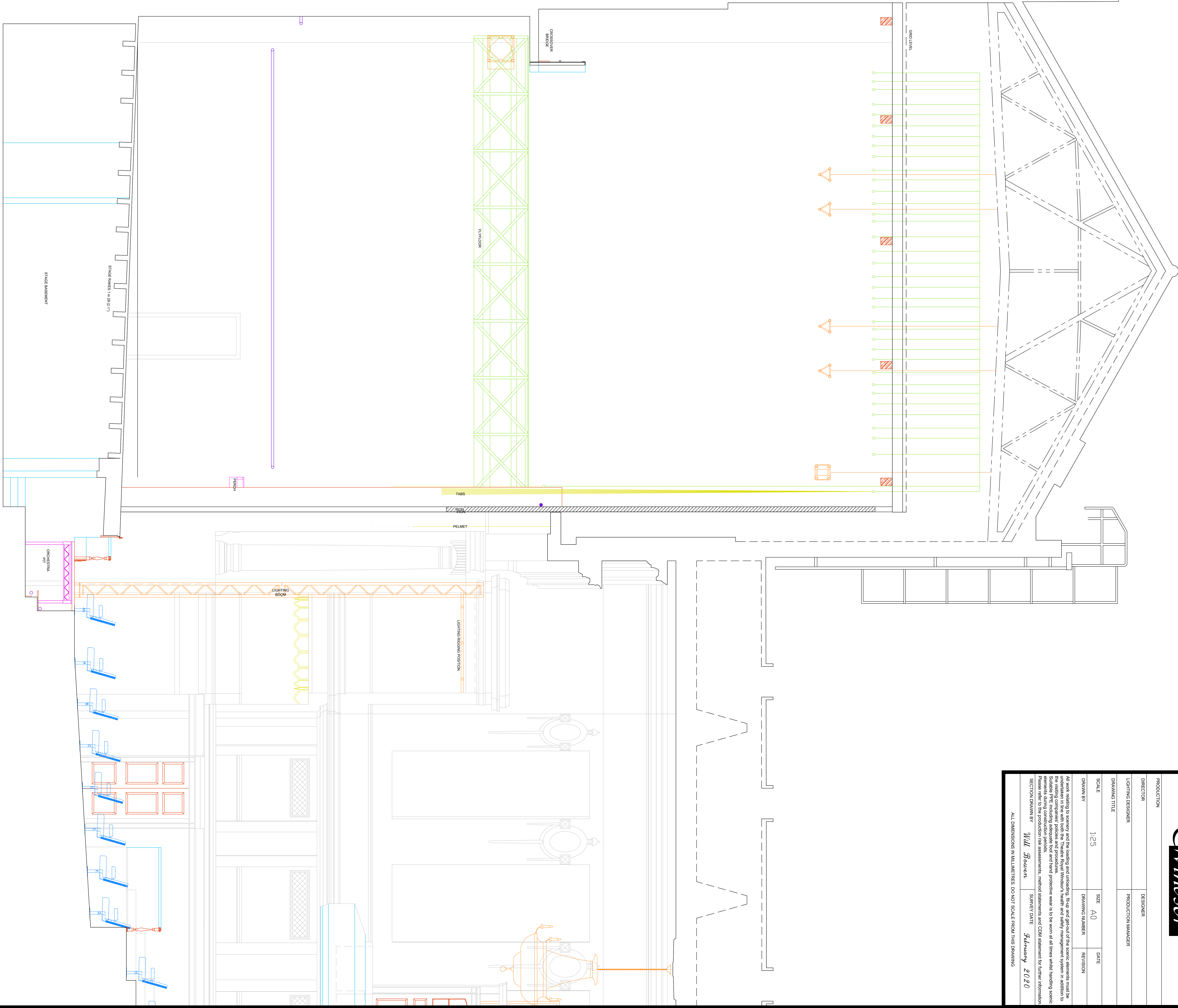


35
34
33
32
31
30
29
28
27
26
25
24
23
22
21
20
19
18
17
16
15
14
13
12
11
10
9
8
7
6
5
4
3
2
1

House Border
Tabs



0 1 2 3 4 5 6 7 8 9 10m



PRODUCTION	DESIGNER	
DIRECTOR	PRODUCTION MANAGER	
LIGHTING DESIGNER		
DRAWING TITLE		
SCALE	SIZE	DATE
1:25	A0	
DRAWN BY	DRAWING NUMBER	REVISION
<p>All work relating to scenery and the loading and unloading, fit-up and grid-out of the scenic elements must be undertaken in line with both the Theatre Royal Windsor's health and safety management system in addition to the existing competence, policies and procedures. All work must be undertaken in accordance with the relevant standards, codes of practice and the protective wear is to be worn at all times when handling scenic elements during construction periods. Please refer to the production risk assessments, method statements and CDM statement for further information.</p>		
SECTION DRAWN BY	SUBJECT DATE	REVISION
Will Bowen	January 2020	
ALL DIMENSIONS IN MILLIMETRES DO NOT SCALE FROM THIS DRAWING		